



# STRAUB-REP-2-HP-75

Repair Coupling for High Pressures

**straub**   
  
**the original**

  
**aliaxis**

# The Repair Coupling

## STRAUB-REP-2-HP-75

The STRAUB-REP-2-HP-75 has been designed to be used as a high pressure repair coupling for petrochemical pipeline applications. This STRAUB coupling can be used for repairing cracks and holes in any situation. Diameters over  $\varnothing$  508 mm are equipped with handles to simplify assembly.

### Your Benefits

- Ideal for repairing cracks and holes
- Designed for high pressures
- Available from  $\varnothing$  219.1 mm to  $\varnothing$  821.0 mm
- Double shell casing
- Welded-on handles
- Re-useable
- Full technical support
- Over 50 years of market experiences



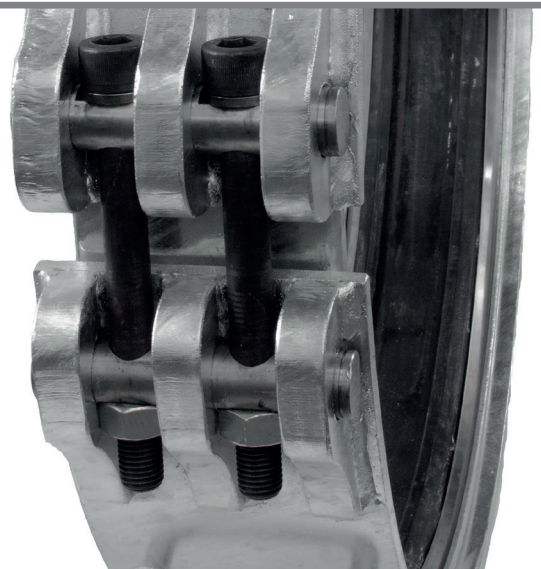
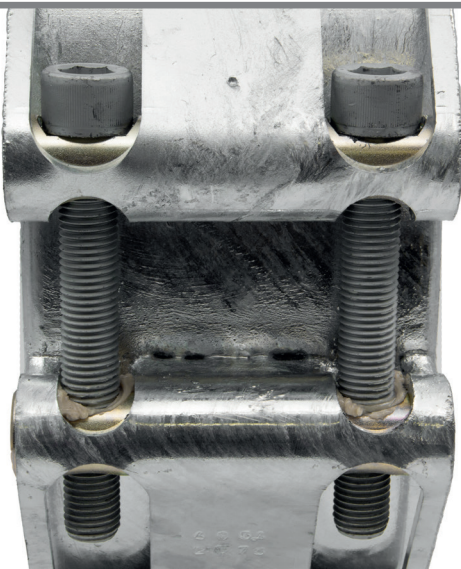
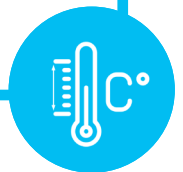
### Hydrostatic pressure test

90 bar  
20 °C (ambient temperature)  
3 x repeated



### Long-term temperature test

60 bar  
75 °C (hot water bath)  
1'000 hours

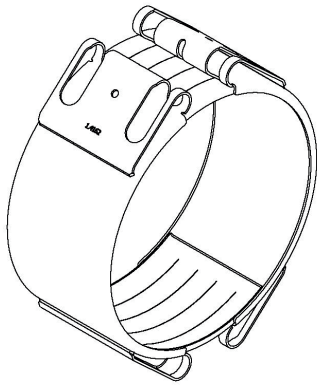


**STRAUB-REP-2-HP-75 | ø 219.1 - 821.0 mm**

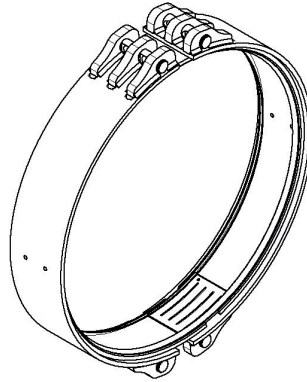
Components	Materials
Casing	S355J2, hot-dipped galvanised
Bolts	12.9
Bars	1.0737 / 1.0577
Anchoring rings	AISI 301
Strip insert (option)	AISI 316 or similar / HDPE

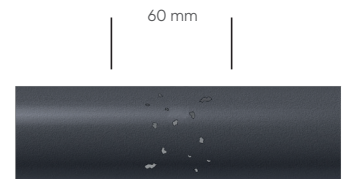
<b>Sealing sleeve</b>	Temp.: -20 °C up to +80 °C
<b>NBR</b>	Medium: water, gas, oil, fuel and other hydrocarbons



REP-2-HP-75 version from Ø 219.1 mm to Ø 507.0 mm



REP-2-HP-75 version from Ø 508.0 mm to Ø 821.0 mm



Pipe corrosion width of up to 60 mm



OD [mm]	Clamping range [mm]	PN [bar]	C [mm]	DV [mm]	X [mm]	Max. Width of the Pipe corrosion [mm]	Torque rate [Nm]
219.1	217.0 - 222.0	75	142	246.1	323	60	120
273.0	270.5 - 275.5	75	148	318.0	359	60	180
325.0	322.0 - 328.0	75	148	369.0	411	60	230
355.6	353.0 - 358.0	75	148	401.0	444	60	230
377.0	373.5 - 380.5	75	148	420.0	450	60	230
406.4	404.0 - 409.0	75	148	433.4	510	60	230
426.0	421.5 - 430.5	75	148	420.0	450	60	230
457.0	454.0 - 460.0	75	148	502.0	546	60	230
508.0	505.0 - 511.0	75	180	572.0	606	60	230
530.0	526.0 - 534.0	75	180	583.0	630	60	230
610.0	606.0 - 613.0	75	180	674.0	739	60	250
630.0	626.0 - 634.50	75	180	693.0	768	60	250
720.0	716.0 - 724.0	75	180	792.0	878	60	250
762.0	758.0 - 766.0	75	180	826.0	954	60	250
821.0	817.0 - 825.0	75	180	896.0	1002	60	250

Continuously variable intermediate sizes and bigger diameters on request

**Remarks:**

- PN = Working pressure considering the application loads | Test pressure = PN x 1.25
- C = Width of the casing
- DV = Outside diameter of the casing
- X = Largest possible diameter
- Following Fitting instructions
- 2-part repair solution for pipeline applications and not suitable for connecting pipes
- Non-axial restraint
- NBR sealing sleeve available, other sealing sleeves available on request



STRAUB Werke AG  
Straubstrasse 13  
CH- 7323 Wangs

Tel +41 81 725 41 00  
straub@straub.ch

[www.straub.ch](http://www.straub.ch)

Member of the Aliaxis Group