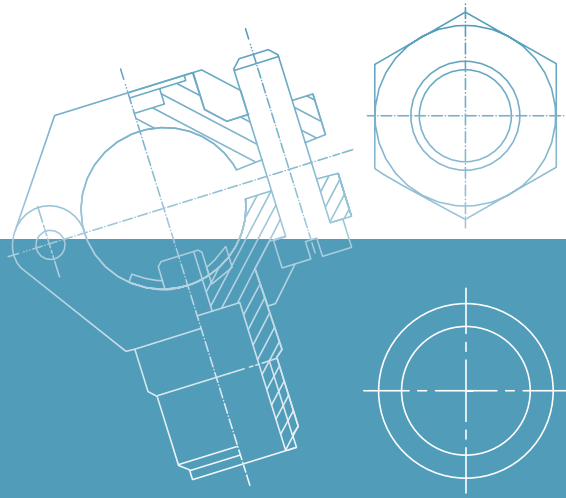




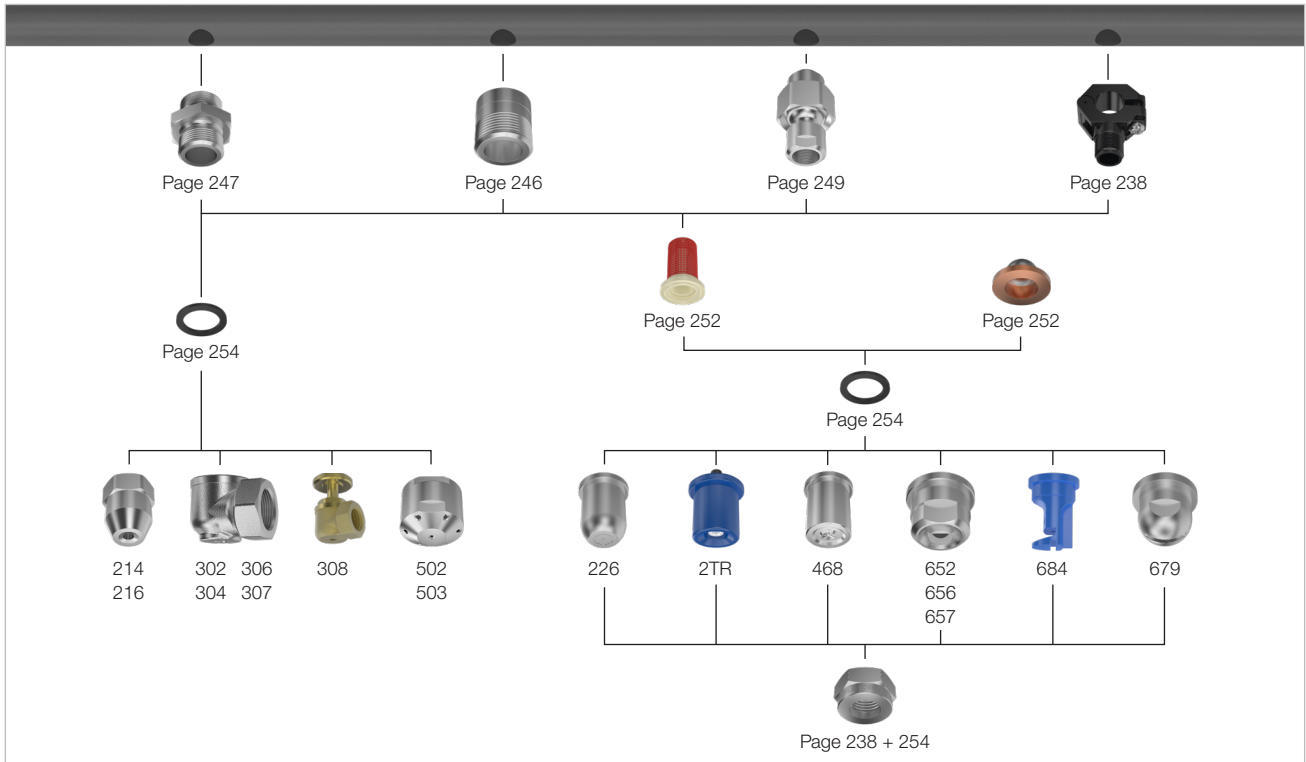
# ACCESSORIES



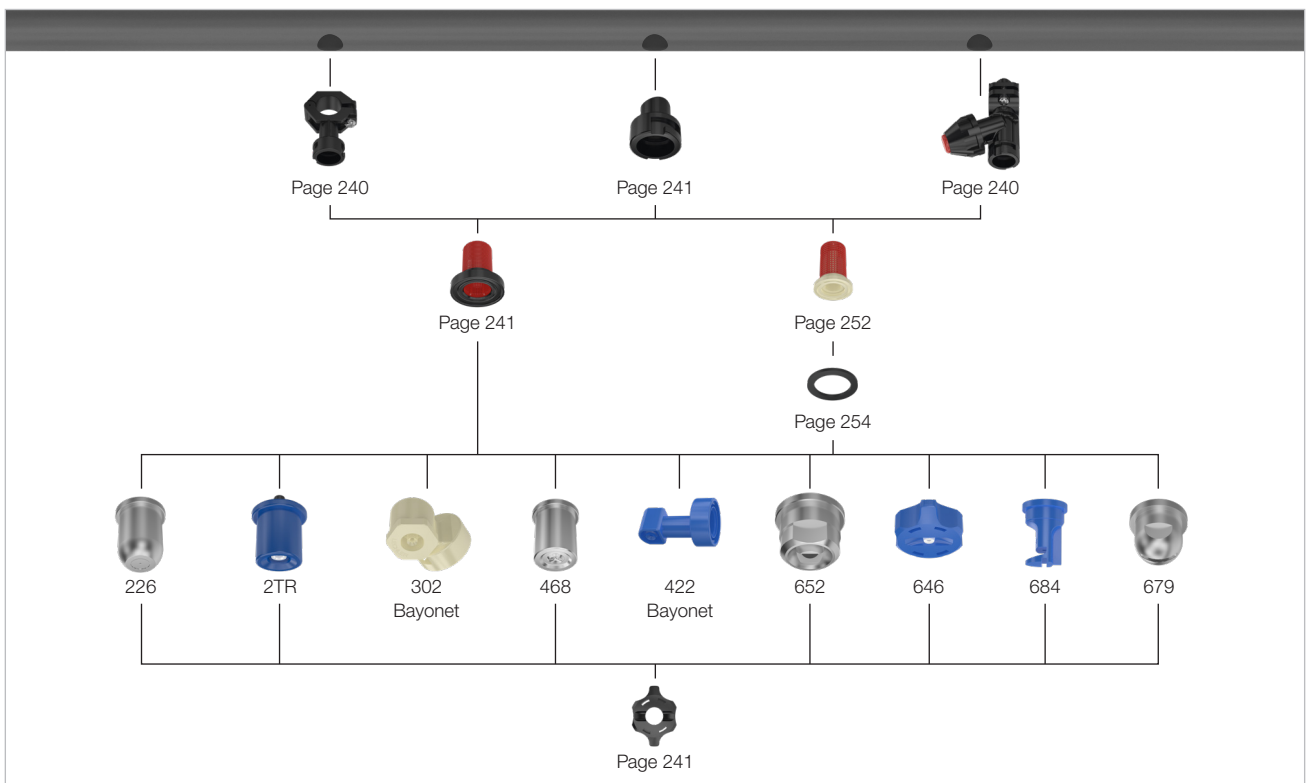
# NOZZLE FASTENING ASSEMBLING OPTIONS FOR ALL PURPOSES



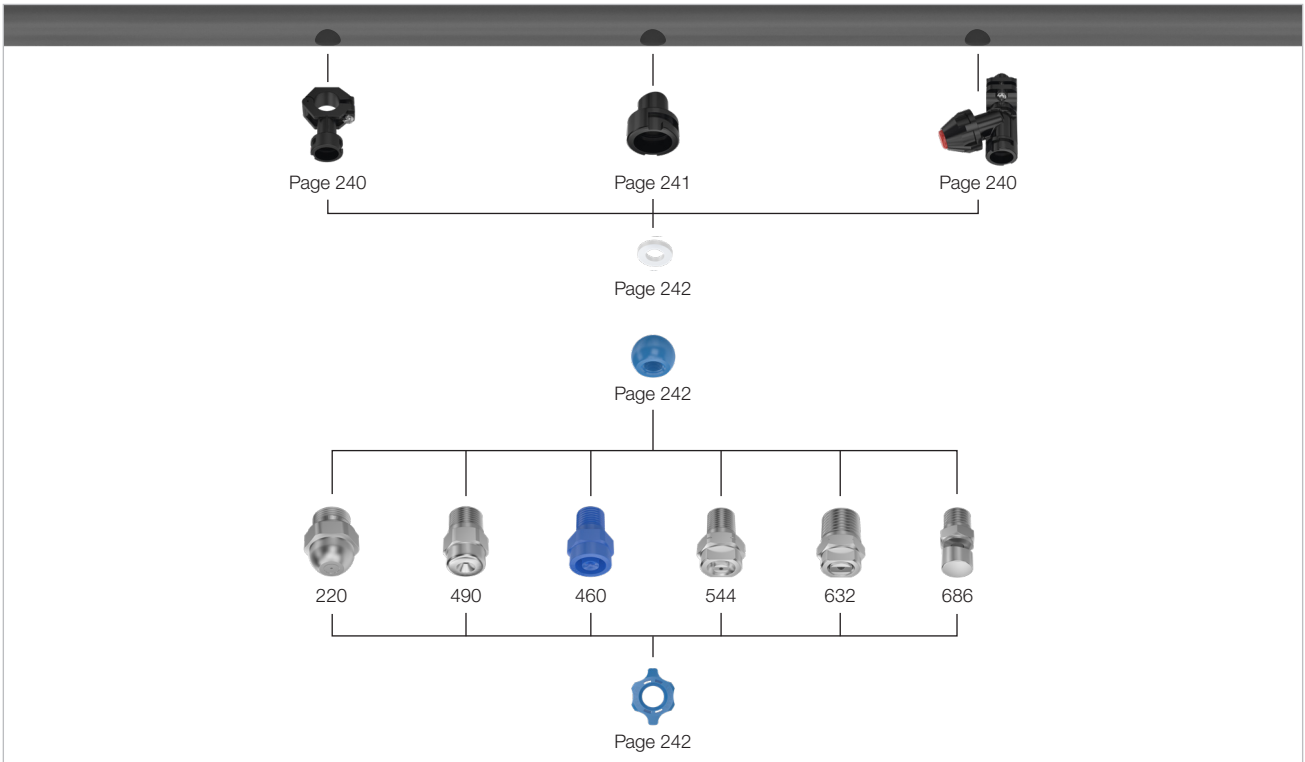
## Assembly accessories for nozzles without thread or with female thread



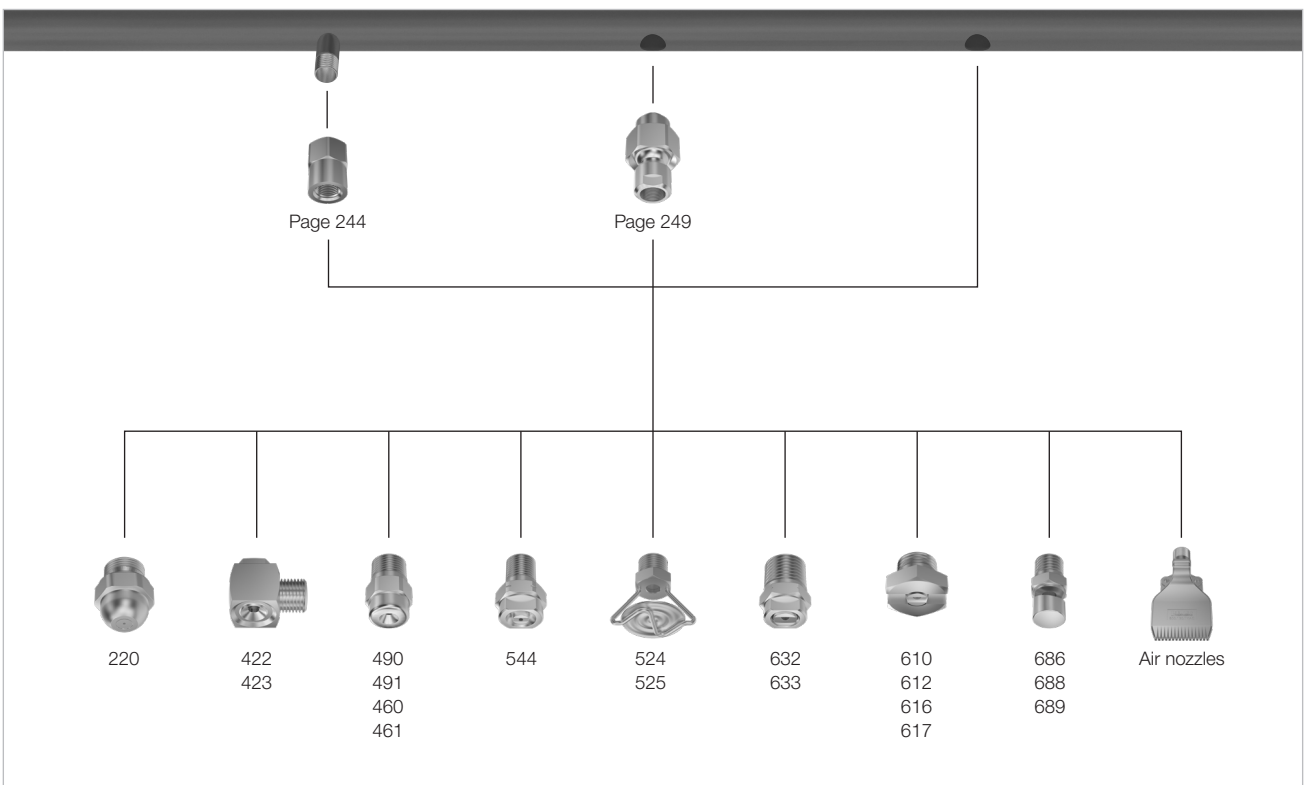
## Bayonet quick-release system for nozzles without thread or with bayonet connection



## Bayonet quick-release system with ball joint for nozzles with male thread

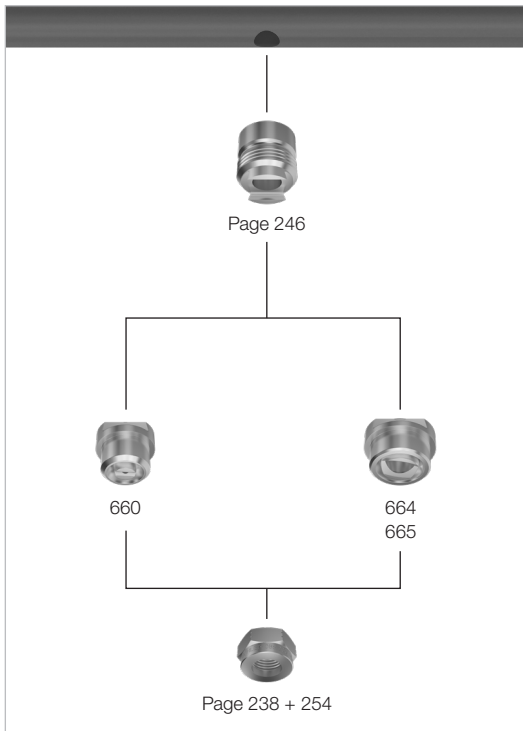


## Assembly accessories for nozzles with male thread

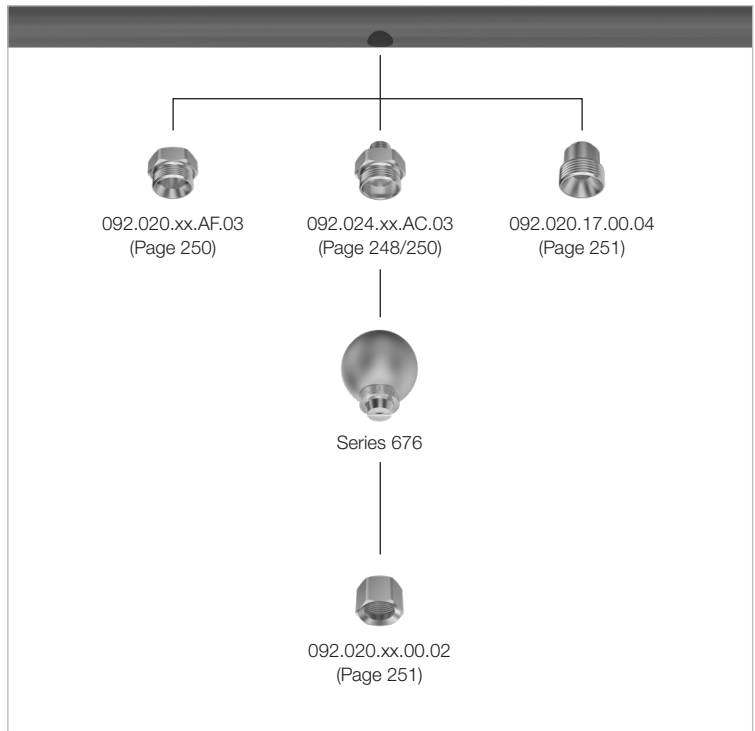




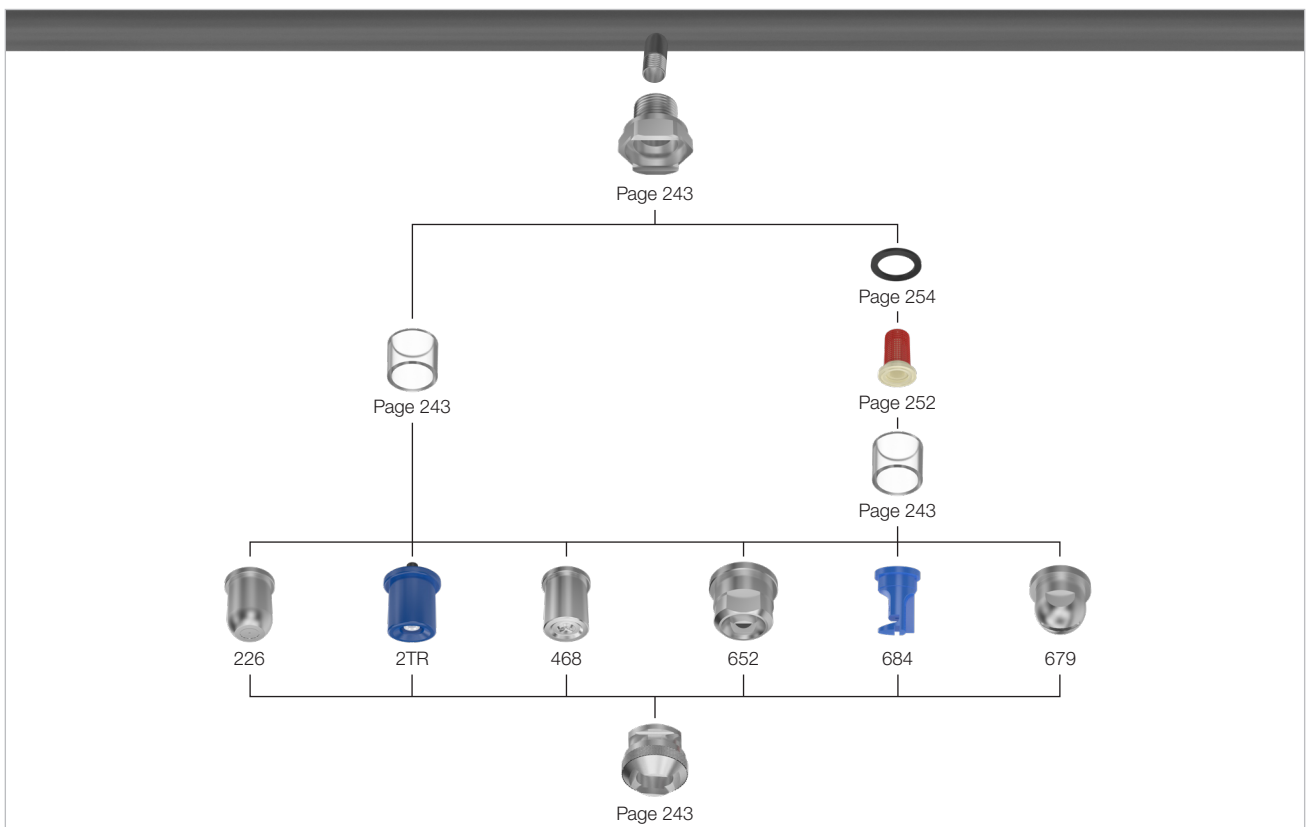
### Assembly accessories for nozzles with dovetail version



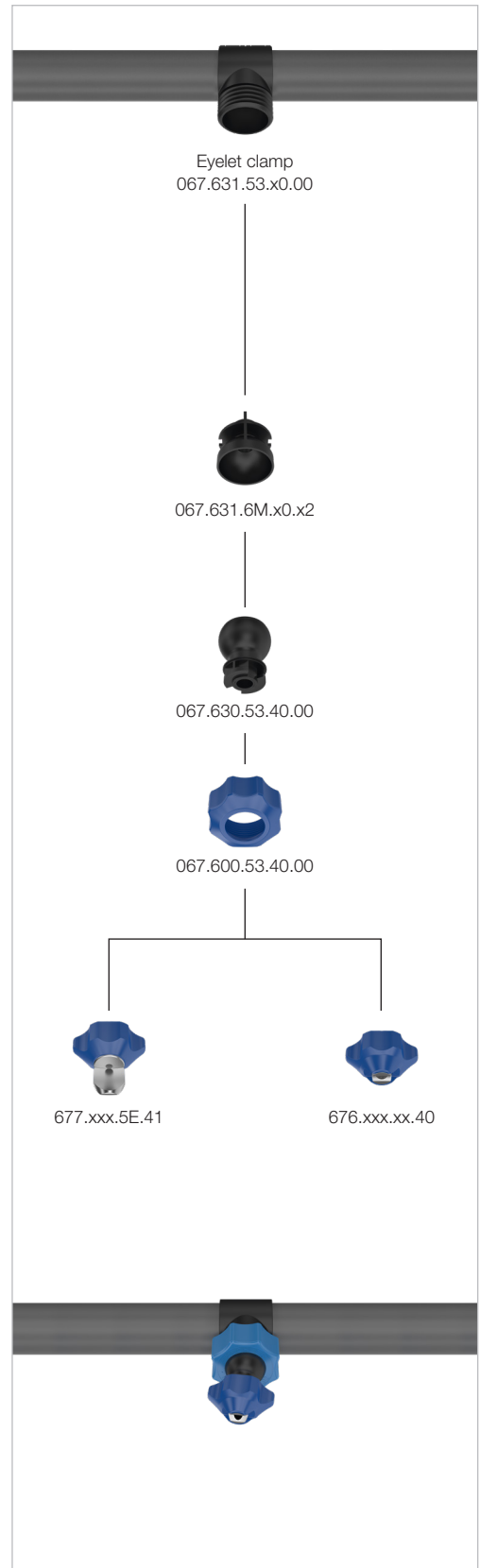
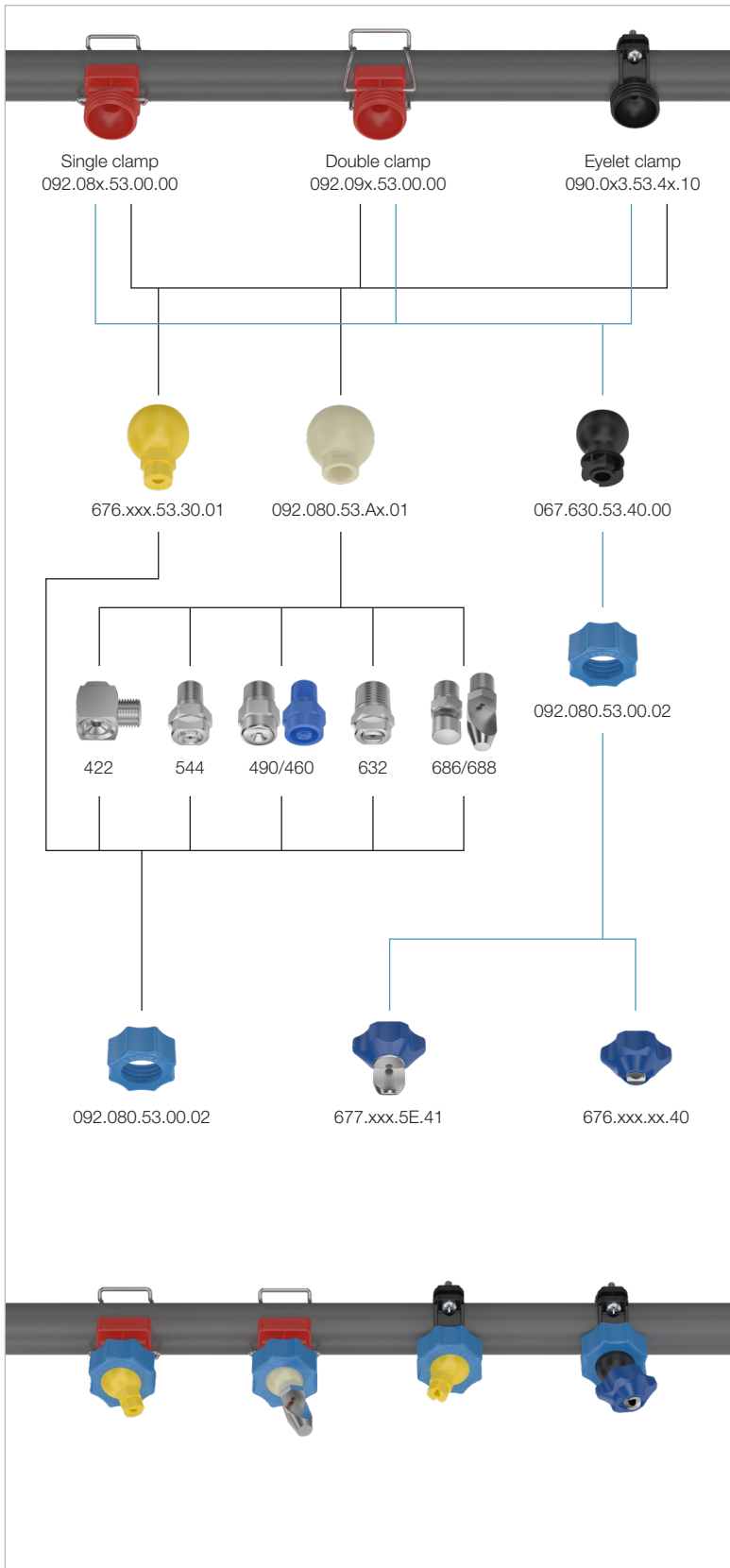
### Assembly accessories for nozzles with integrated ball joint



### TWISTLOC quick-release system for nozzles without thread



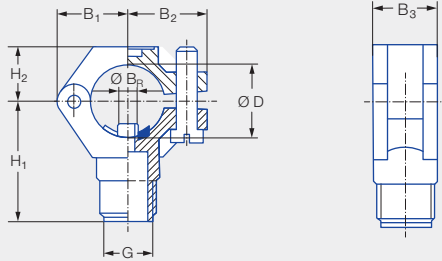
MEMOSPRAY/Easy-Clip combination options



# Eyelet clamps with male thread



## Eyelet clamps with male thread

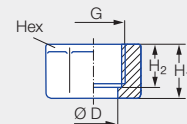
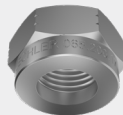


Series	Ordering no.			Screw (material)	G BSPP	Pipe Ø	Dimensions [mm]							Weight [g] (polyamide)		
	Type	Mat. no.					B <sub>1</sub>	B <sub>2</sub>	B <sub>3</sub>	H <sub>1</sub>	H <sub>2</sub>	Ø B <sub>R</sub> <sup>1</sup>	Ø B <sup>2</sup>		Ø D	
		51 Black	53 White													5E Blue
226/2TR/ 216/302/ 308/350/468/ 652/679/684	090.053	●	●	●	Stainless steel 304	3/8	3/8"	19.0	22.0	18.5	34.5	14.5	6.0	6.2-6.4	16.5-18.0	20.0
	090.003	●	●	●		3/8	1/2"	21.2	23.8	18.5	36.5	16.5	6.0	6.2-6.4	20.0-22.0	20.0
	090.013	●	●	●		3/8	3/4"	24.5	26.5	22.0	39.5	17.5	7.6	7.8-8.0	25.0-27.5	25.0
	090.023	●	●	●		3/8	1"	30.0	31.0	22.0	44.0	21.0	10.6	10.8-11.0	32.0-34.5	32.0
	090.033	●	●	●		3/8	1 1/4"	34.0	35.5	25.0	48.0	25.0	12.6	12.8-13.0	40.0-43.0	38.0

<sup>1</sup> Ø B<sub>R</sub> = spigot diameter.

<sup>2</sup> Ø B = recommended bore diameter.

## Retaining nuts for eyelet clamps



Series	Ordering no.					G BSPP	Dimensions [mm]				Weight [g]	
	Type	Mat. no.					H <sub>1</sub>	H <sub>2</sub>	Ø D	Hex		
		16	17 <sup>1</sup>	30	56 Black							5E Blue
226/2TR/ 468/548/ 652/660/679/ 684	065.200	●	●	●		3/8	13.0	10.0	12.8	22	25.0 (Brass)	
	065.200				●	3/8	14.5	11.5	12.8	22	5.0 (PVDF)	

<sup>1</sup> We reserve the right to supply material 316Ti or 316L under material no. 17.

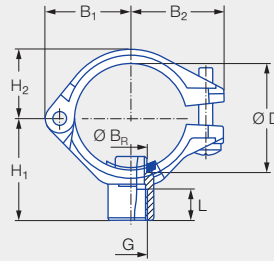
Ordering Type + Material no. = Ordering no.  
example: 090.053 + 51 = 090.053.51

Strainers and ball-type non-return valves can be found on Page 252/253.

# Eyelet clamps with female thread



Eyelet clamps with female thread



For all nozzles with	Ordering no.						Screw (material)	Pipe Ø	Dimensions [mm]							Weight [g] (polyamide)		
	Type	Mat. no.			Code				B <sub>1</sub>	B <sub>2</sub>	B <sub>3</sub>	H <sub>1</sub>	H <sub>2</sub>	L	Ø B <sub>R</sub> <sup>1</sup>		Ø B <sup>2</sup>	Ø D
		51 Black	53 White	5E Blue	1/8 BSPP	1/4 BSPP												
Male thread 1/8 BSPP 1/4 BSPP	090.100	●	●	●	AB	AD	Stainless steel 316	3/8"	20.0	23.0	18.5	28.0	14.0	12.0	6.0	6.2–6.4	16.5–18.0	18.0
	090.110	●	●	●	AB	AD		1/2"	22.0	25.0	18.5	31.0	16.0	12.0	6.0	6.2–6.4	20.0–22.0	19.0
	090.120	●	●	●	AB	AD		3/4"	25.0	28.0	22.0	33.0	19.0	12.0	7.6	7.8–8.0	25.0–27.5	24.0
	090.130	●	●	●	AB	AD		1"	30.0	33.0	22.0	36.0	23.0	12.0	10.6	10.8–11.0	32.0–34.5	34.0
	090.140	●	●	●	AB	AD		1 1/4"	34.0	37.0	25.0	40.0	28.0	12.0	12.6	12.8–13.0	40.0–43.0	39.0

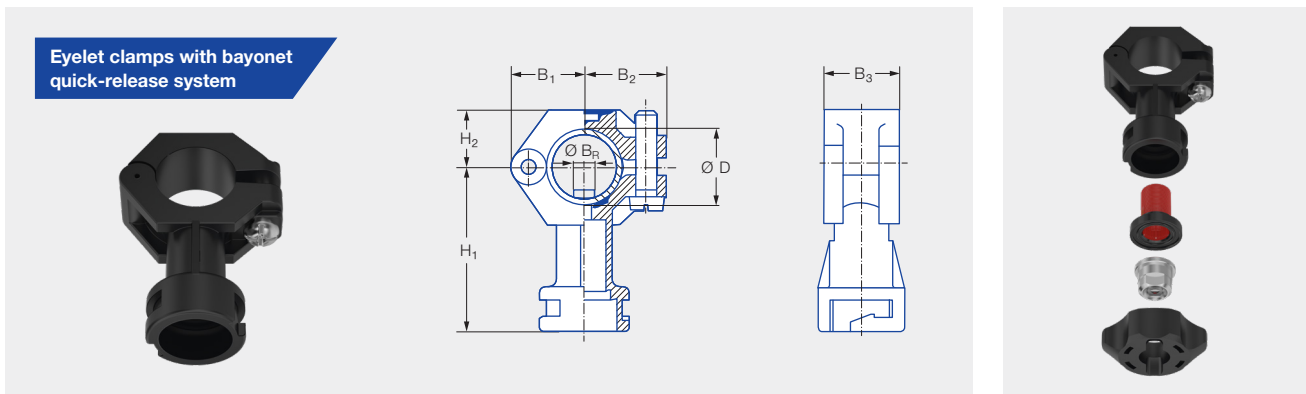
<sup>1</sup> Ø B<sub>R</sub> = spigot diameter.

<sup>2</sup> Ø B = recommended bore diameter.

Ordering Type + Material no. + Code = Ordering no.  
example: 090.100 + 51 + AB = 090.100.51.AB



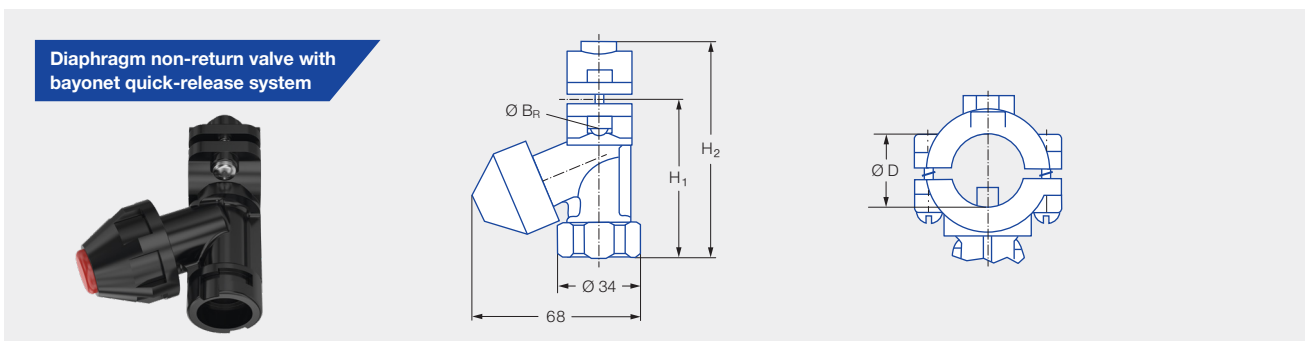
# Eyelet clamps with bayonet connection



Series	Ordering no.				Screw (material)	Pipe Ø	Dimensions [mm]							Weight [g] (Polyamide)		
	Type	Mat. no.					Code	B <sub>1</sub>	B <sub>2</sub>	B <sub>3</sub>	H <sub>1</sub>	H <sub>2</sub>	Ø B <sub>R</sub> <sup>1</sup>		Ø B <sup>2</sup>	Ø D
		51 Black Polyamide	53 White Polypropylene	5E Blue PVDF												
226/2TR/ 302 bayonet/ 422 bayonet/ 468/652/646/ 684/679	090.003	●	●	●	KA	Stainless steel 304	1/2"	21.2	23.8	18.5	49.5	16.5	6.0	6.2–6.4	20.0–22.0	22.0
	090.013	●	●	●	KA		3/4"	24.5	26.5	22.0	52.5	17.5	7.6	7.8–8.0	25.0–27.5	26.0
	090.023	●	●	●	KA		1"	30.0	31.0	22.0	57.0	21.0	10.6	10.8–11.0	32.0–34.5	32.0

<sup>1</sup> Ø B<sub>R</sub> = spigot diameter.

<sup>2</sup> Ø B = recommended bore diameter.



Series	Ordering no.			Screw (material)	Pipe Ø	Ø D [mm]	Pressure [bar]		Dimensions [mm]				Weight [g]	
	Type	Mat. no.					Code	Opening pressure	Closing pressure	H <sub>1</sub>	H <sub>2</sub>	Ø B <sub>R</sub> <sup>1</sup>		Ø B <sup>2</sup>
		56 Black	POM											
226/2TR/ 302 bayonet/ 422 bayonet/ 468/652/646/ 684/679	065.272	●		KH	Stainless steel 303	1/2"	20.0–22.0	0.8	0.6	59.0	84.0	6.0	6.2–6.4	48.0
	065.272	●		KL		3/4"	25.0–27.5	0.8	0.6	66.0	90.0	9.6	9.8–10.0	53.0

<sup>1</sup> Ø B<sub>R</sub> = spigot diameter.

<sup>2</sup> Ø B = recommended bore diameter.

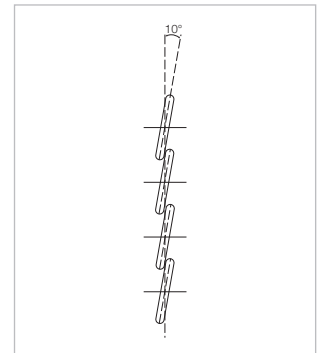
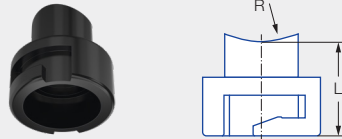
Material	Max. temperature [°C]	Max. pressure [bar]
PA, PP, PVDF, POM	65	10
PA, PP, PVDF, POM	80	8
PVDF	100	4

**Notice:** Please consider the material combination when using bayonet eyelet clamps with bayonet quick-release system nuts. The nuts may be difficult to turn when using different materials.

# Accessories for bayonet system



## Bayonet welded nipple



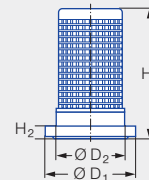
Twist angle to the right in relation to the pipe axis. Twist angle 10°. Other twist angles available on request.

Series	Ordering no.			Dimensions [mm]		Weight [g]
	Type	Mat. no.		L	R	
		50	53			
226/2TR/302 bayonet/ 422 bayonet/468/ 652/646/684/679	095.016.xx.08.05 <sup>1</sup>	●	●	25.0	16.0	10.0

<sup>1</sup> Replace "xx" with the desired material no.

## Strainer with gasket

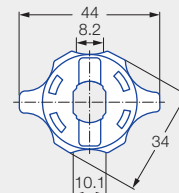
Suitable for bayonet quick-release system nuts 065.202



Performance size	Ordering no.		Colour	Dimensions [mm]					Weight [g]
	Type	Mat. no.		Mesh size	H <sub>1</sub>	H <sub>2</sub>	Ø D <sub>1</sub>	Ø D <sub>2</sub>	
		7J							
xxx.32x-xxx.44x	065.268	●	Blue	0.25	19.20	3.00	18.00	12.00	2.00
xxx.48x-xxx.56x	065.269	●	Red	0.65	19.20	3.00	18.00	12.00	2.00

## Bayonet quick-release system nuts

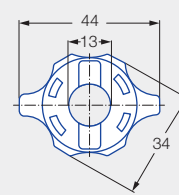
Incl. gasket 065.242.73 (material: Rubber)



Series	Ordering no.			Colour	Weight [g]	
	Type	Mat. no.				
		POM	Polypropylene			PVDF
652/679	065.202.56.00	●		Red	10.0	
	065.202.53.00		●	Grey	10.0	
	065.202.5E.00			Blue	10.0	

## Bayonet quick-release system nuts

Incl. gasket 065.242.73 (material: Rubber)



Series	Ordering no.		Colour	Weight [g]
	Type	Mat. no.		
		POM		
226/2TR/ 468/684	065.202.56.11	●	Black	10.0
	065.202.53.11		Grey	10.0

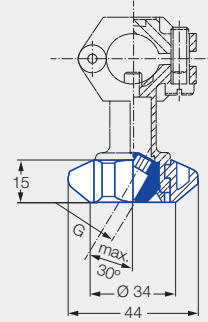
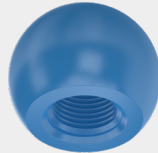
**Notice:** Please consider the material combination when using bayonet eyelet clamps with bayonet quick-release system nuts. The nuts may be difficult to turn when using different materials.



## Ball joints for bayonet quick-release system

Ball joint system for nozzles with 1/8" and 1/4" male thread.

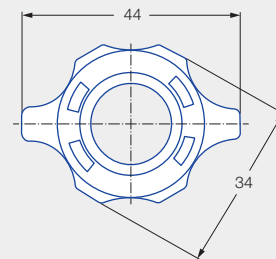
Ball joint for eyelet clamps with bayonet quick-release system



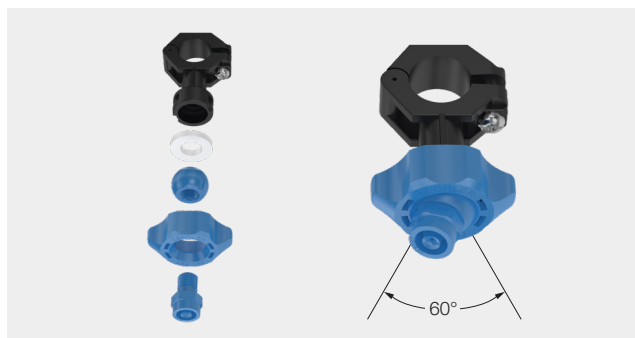
For all nozzles with 1/8" or 1/4" male thread	Ordering no.				Colour	Weight [g]
	Type	Mat. no.	Code			
		PVDF	1/8 BSPP	1/4 BSPP		
Ball joint	<b>092.150</b>	<b>5E</b>	<b>AB</b>	<b>AD</b>	Blue	5.0

Bayonet quick-release system nut for ball joint

Incl. O-ring  
Ordering no. 095.015.7C.04.16.0  
(material: 72 NBR 872)



For all nozzles with 1/8" or 1/4" male thread	Ordering no.			Colour	Weight [g]
	Type	Mat. no.			
		PVDF			
Quick-release system nut	<b>092.150.5E.00</b>	●		Blue	28.0



Max. temperature [°C]	Max. pressure [bar]
65	10
80	8
100	4

Ordering Type + Material no. + Code = Ordering no.  
example: 092.150 + 5E + AB = 092.150.5E.AB

# » TWISTLOC

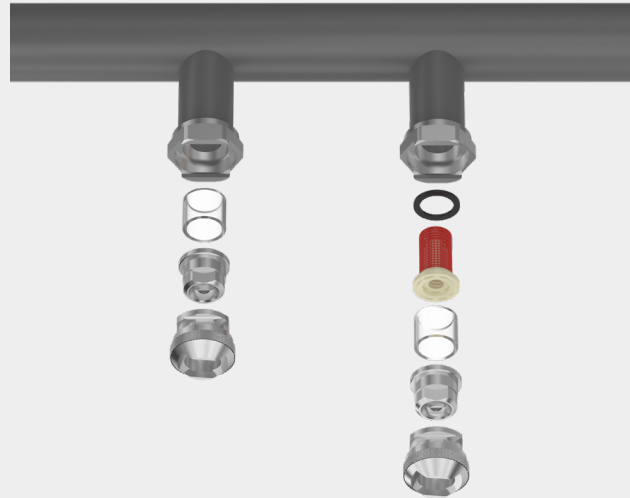
## Quick-change nozzle system



### Lechler TWISTLOC, nozzle changing in less than no time.

Save time and money with the quick-change nozzle system.

- **Quick:**  
It takes just one twist to install or remove the nozzle.
- **Easy:**  
Can be installed without tools – even in difficult-to-access locations and in bad lighting conditions.
- **Safe:**  
Installation errors are avoided, as the nozzles are always set to the correct direction.
- **Max. pressure:**  
15 bar.



System components		Ordering no.							Inner Ø D [mm]	Weight [g]	
		Type	Mat. no.				Code				
			1C	16	5E	7A	1/4 BSPT	3/8 BSPT			Welded connec- tion
Threaded nipple		092.102	•				CC		8.0	25.0	
		092.102	•					CE	11.6	25.0	
		092.102			•			CE	8.0	10.0	
Welded nipple		092.104	•					00	11.6	45.0	
Gasket for material 304 SS and 303 SS		092.113							–	1.0	
Gasket for material PVDF		092.115							–	1.0	
Gasket, incl. rubber gasket ring for use with non-return valves or strainers		092.116							–	2.0	
Gasket, incl. rubber gasket ring for use with non-return valves or strainers, for PVDF material		092.114							–	2.0	
Quick-release system For nozzle series 652/679		092.106	•	•					–	20.0 (stainless steel)	
Quick-release system For nozzle series 226/468/684		092.108	•	•					–	20.0 (stainless steel)	

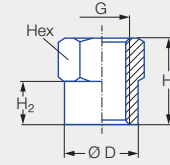
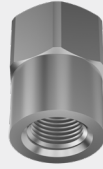


**Non-return valves, strainers**  
For installation in nipples with inner Ø 11.6 mm (see Page 252/253).

Ordering Type + Material no. + Code = Ordering no.  
example: 092.102 + 16 + CC = 092.102.16.CC



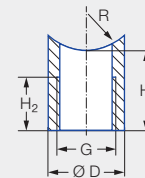
## Sockets



For all nozzles with	Ordering no.				G BSPP	Dimensions [mm]				Weight [g] (Brass)	
	Type	Mat. no.				H <sub>1</sub>	H <sub>2</sub>	Ø D	Hex		
		1Y	17	30							53
1/8" male thread	040.270	●		●		1/8	20.0	10.0	13.8	14	20.0
1/4" male thread	061.220	●		●		1/4	20.0	10.0	16.8	17	20.0
3/8" male thread	040.271		●	●		3/8	20.0	10.0	21.8	22	25.0
	040.271				●	3/8	20.0	11.0	25.0	22	25.0
1/2" male thread	040.272		●	●		1/2	30.0	15.0	26.5	27	70.0
3/4" male thread	061.620		●	●		3/4	40.0	20.0	31.5	32	108.0

**Notice:** Sockets are also suitable for welding.

## Sockets with radius

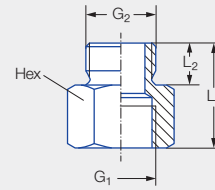


For all nozzles with	Ordering no.		G BSPP	Dimensions [mm]			Weight [g]
	Type	Mat. no.		H <sub>1</sub>	H <sub>2</sub>	Ø D	
		1Y					
1/4" male thread	040.228.1Y.yy <sup>1</sup>	●	1/4	18.0	12.0	17.0	16.0

<sup>1</sup> Replace "yy" with the desired radius R (R = 10/13/16/20/25 or 31 mm).

Ordering Type + Material no. = Ordering no.  
example: 040.270 + 1Y = 040.270.1Y

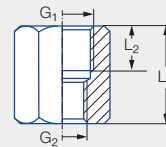
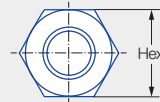
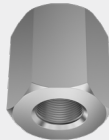
## Sockets



Connection components	Ordering no.			G <sub>1</sub> BSPP	G <sub>2</sub> BSPP	Dimensions [mm]			Weight [g] (Brass)
	Type	Mat. no.				L <sub>1</sub>	L <sub>2</sub>	Hex	
		17	30						
		Stainless steel 316Ti	Brass						
1/8" to 3/8"	<b>040.211</b>	●	●	1/8	3/8	20.0	10.0	22	40.0
1/4" to 3/8" short	<b>065.221</b>	●	●	1/4	3/8	23.0	10.0	22	40.0
1/4" to 3/8" long	<b>065.228</b>	●	●	1/4	3/8	36.0 <sup>1</sup>	14.0	19	45.0
3/8" to 3/8"	<b>065.220</b>	●	●	3/8	3/8	25.0	10.0	22	40.0
3/4" to 3/4"	<b>065.620</b>	●	●	3/4	3/4	35.0	14.0	32	280.0

<sup>1</sup> Mounting of nozzle filters and ball-type non-return valves possible (see Page 252/253).

## Reduction socket

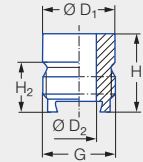


Connection components	Ordering no.			G <sub>1</sub> BSPP	G <sub>2</sub> BSPP	Dimensions [mm]			Weight [g]
	Type	Mat. no.				L <sub>1</sub>	L <sub>2</sub>	Hex	
		1Y	30						
		Stainless steel 316L	Brass						
3/8" to 1/4"	<b>095.019.30.00.23</b>		●	3/8	1/4	26.0	12.0	22	55.0

Ordering Type + Material no. = Ordering no.  
example: 040.211 + 17 = 040.211.17

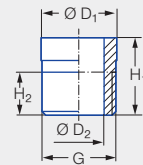


Welded nipple with dovetail guide



Series	Ordering no.				G BSPP	Dimensions [mm]				Weight [g]
	Type	Mat. no.				H <sub>1</sub>	H <sub>2</sub>	Ø D <sub>1</sub>	Ø D <sub>2</sub>	
		17	Stainless steel 316Ti							
660	<b>066.011</b>	●			3/8	18.0	11.5	16.5	8.0	21.0
664/665	<b>066.410</b>	●			3/4	27.0	15.5	28.0	14.0	65.0

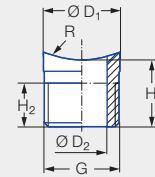
Welded nipple



Series	Ordering no.					G BSPP	Dimensions [mm]				Weight [g] (Brass)
	Type	Mat. no.					H <sub>1</sub>	H <sub>2</sub>	Ø D <sub>1</sub>	Ø D <sub>2</sub>	
		02	17	30	53						
226/216/2TR/302/308/350/ 468/652/684/548/679	<b>065.210</b>	●	●	●	●	3/8	18.0	10.0	17.2	11.6	20.0
306/307/502/ 503/656/657	<b>065.610</b>	●	●		●	3/4	27.0	14.0	28.0	18.0	61.0

Ordering Type + Material no. = Ordering no.  
example: 066.011 + 17 = 066.011.17

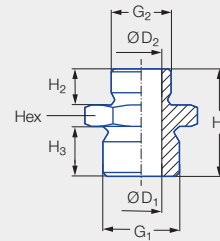
**Welded nipple with radius**



Series	Ordering no.		G BSPP	Dimensions [mm]				Weight [g]
	Type	Mat. no.		H <sub>1</sub>	H <sub>2</sub>	Ø D <sub>1</sub>	Ø D <sub>2</sub>	
		<b>17</b>						
		Stainless steel 316Ti						
226/216/2TR/302/308/350/468/652/684/548/679	<b>065.217.17.yy<sup>1</sup></b>	●	3/8 A	15.0	10.0	17.2	11.5	20.0
306/307/502/503/656/657	<b>065.612.17.yy<sup>1</sup></b>	●	3/4 A	23.0	14.0	28.0	18.0	61.0

<sup>1</sup> Replace "yy" with the desired radius R (R = 10/13/16/20/25 or 31 mm).

**Double nipple**



Series	Ordering no.			G <sub>1</sub> BSPP	G <sub>2</sub> BSPP	Dimensions [mm]					Weight [g] (Brass)	
	Type	Mat. no.				H <sub>1</sub>	H <sub>2</sub>	H <sub>3</sub>	Ø D <sub>1</sub>	Ø D <sub>2</sub>		Hex
		<b>17</b>	<b>30</b>									
		Stainless steel 316Ti	Brass									
226/216/2TR/302/308/350/468/652/684/548/679	<b>065.215<sup>1</sup></b>	●	●	3/8	1/4	25.0	10.0	10.0	10.0	7.0	22	30.0
	<b>065.215.xx.02<sup>2</sup></b>	●	●	3/8	1/4	35.0	10.0	10.0	11.6	7.0	22	32.0
	<b>065.211</b>	●	●	3/8	3/8	25.0	10.0	10.0	11.5	–	22	25.0
	<b>065.211.xx.04<sup>2</sup></b>	●	●	3/8	1/2	30.0	10.0	14.0	11.5	–	27	62.0
306/307/502/503/656/657	<b>065.611</b>	●	●	3/4	3/4	35.0	14.0	14.0	18.0	–	32	90.0

<sup>1</sup> Not to be used with non-return valve or strainer.

<sup>2</sup> Replace "xx" with the desired material no.

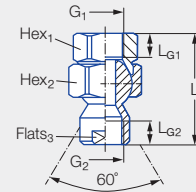
Ordering Type + Material no. = Ordering no.  
 example: 065.217.17.yy + 17 = 065.217.17.yy.17



# Ball joints with threaded connection

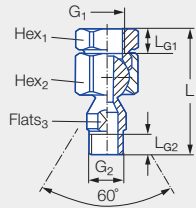


## Ball joints with female thread



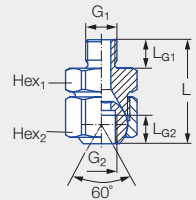
For all nozzles with	Ordering no.				G <sub>1</sub> BSPP	G <sub>2</sub> BSPP	Dimensions [mm]						Weight [g] (Brass)
	Type	Mat. no.		Code			L	L <sub>G1</sub>	L <sub>G2</sub>	Hex <sub>1</sub>	Hex <sub>2</sub>	Flats	
		16 Stainless steel 303	30 Brass										
1/8" male thread	092.010	●	●	AB	1/8	1/8	43.1	8.0	8.0	22	24	13	110.0
1/4" male thread	092.020	●	●	AD	1/4	1/4	60.3	12.0	11.5	27	27	17	200.0
	092.021	●	●	AF	3/8	1/4	58.3	12.0	11.5	27	27	17	160.0
3/8" male thread	092.030	●	●	AF	3/8	3/8	56.0	12.0	12.0	27	30	19	185.0
1/2" male thread	092.040	●	●	AH	1/2	1/2	71.0	15.5	15.5	36	41	24	425.0
3/4" male thread	092.050	●	●	AL	3/4	3/4	80.0	17.0	17.0	41	46	30	595.0

## Ball joints with male thread



Series	Ordering no.				G <sub>1</sub> BSPP	G <sub>2</sub> BSPP	Dimensions [mm]						Weight [g] (Brass)
	Type	Mat. no.		Code			L	L <sub>G1</sub>	L <sub>G2</sub>	Hex <sub>1</sub>	Hex <sub>2</sub>	Flats	
		16 Stainless steel 303	30 Brass										
226/216/2TR/ 302/308/350/ 468/652/684/ 548/679	092.022	●	●	AD	1/4	3/8	64.0	12.0	10.0	27	27	17	135.0
	092.022	●	●	AF	3/8	3/8	62.0	12.0	10.0	27	27	17	165.0

## Compact ball joints



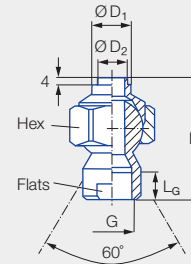
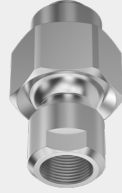
For all nozzles with	Ordering no.				G <sub>1</sub> BSPP	G <sub>2</sub> BSPP	Dimensions [mm]					Weight [g] (Brass)
	Type	Mat. no.		Code			L	L <sub>G1</sub>	L <sub>G2</sub>	Hex <sub>1</sub>	Hex <sub>2</sub>	
		16 Stainless steel 303	30 Brass									
1/8" male thread	092.010	●	●	AA	1/8	1/8	29.3	8.0	8.0	22	24	70.0
1/4" male thread	092.024	●	●	AC	1/4	1/4	44.0	12.0	12.0	27	27	140.0
3/8" male thread	092.030	●	●	AE	3/8	3/8	44.0	12.0	12.0	27	30	160.0

Ordering Type + Material no. + Code = Ordering no.  
 example: 092.010 + 16 + AB = 092.010.16.AB

# Ball joints with welding connection and female thread

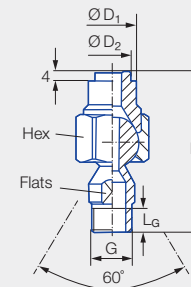
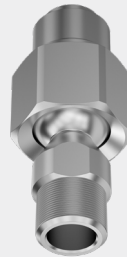


Ball joints with welding connection and female thread



For all nozzles with	Ordering no.				G BSPP	Dimensions [mm]						Weight [g] (Brass)
	Type	Mat. no.		Code		L	L <sub>G</sub>	Ø D <sub>1</sub>	Ø D <sub>2</sub>	Hex	Flats	
		16	30									
1/8" male thread	092.010	●	●	SB	1/8	43.0	8.0	18.0	12.0	24	13	70.0
1/4" male thread	092.020	●	●	SD	1/4	64.5	11.5	20.0	15.0	27	17	150.0
3/8" male thread	092.030	●	●	SF	3/8	59.0	12.0	22.0	15.0	30	19	165.0
1/2" male thread	092.040	●	●	SH	1/2	71.1	15.5	22.0	15.0	41	24	350.0
3/4" male thread	092.050	●	●	SL	3/4	74.8	17.0	22.0	18.0	46	30	470.0

Ball joints with welding connection and male thread



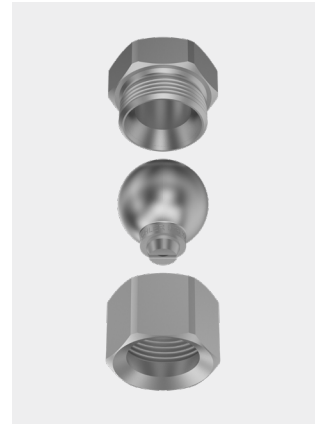
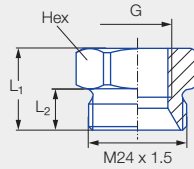
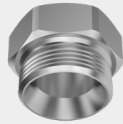
Series	Ordering no.				G BSPP	Dimensions [mm]						Weight [g]
	Type	Mat. no.		Code		L	L <sub>G</sub>	Ø D <sub>1</sub>	Ø D <sub>2</sub>	Hex	Flats	
		16	30									
226/216/2TR/ 302/308/350/ 468/652/684/ 548/679	092.022	●		SE	3/8 A	68.0	10.0	20.0	15.0	27	17	155.0

Ordering Type + Material no. + Code = Ordering no.  
example: 092.010 + 16 + SB = 092.010.16.SB

# Accessories for nozzle series 676 with integrated ball joint



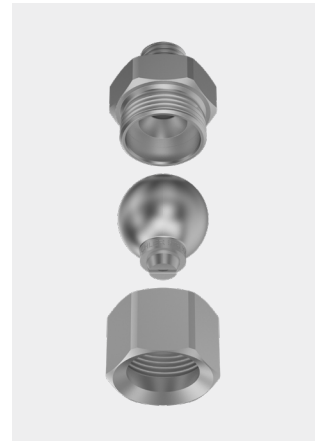
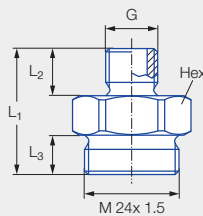
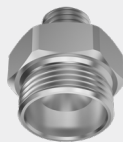
## Threaded sockets



Series	Ordering no.		G BSPP	Dimensions [mm]			Weight [g] (Brass)	
	Type	Mat. no.		L <sub>1</sub>	L <sub>2</sub>	Hex		
		16						30
		Stainless steel 303	Brass					
676	092.020.xx.AF.03 <sup>1</sup>	●	●	3/8	20.0	10.0	27	50.0

<sup>1</sup> Replace "xx" by material no.

## Threaded nipple

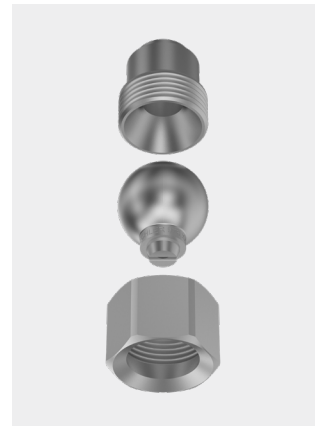
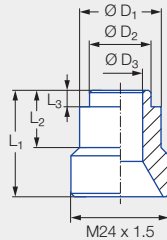


Series	Ordering no.		G BSPP	Dimensions [mm]			Weight [g] (Brass)		
	Type	Mat. no.		L <sub>1</sub>	L <sub>2</sub>	L <sub>3</sub>			
		16						30	
		Stainless steel 303	Brass						
676	092.024.xx.AC.03 <sup>1</sup>	●	●	1/4	32.0	12.0	10.0	27	70.0

<sup>1</sup> Replace "xx" by material no.

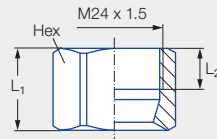
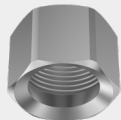
Order    Type            +    Material no.    =    Ordering no.  
example: 092.020.xx.AF.03    +    16                    =    092.020.16.AF.03

### Welded nipple



Series	Ordering no.		Dimensions [mm]						Weight [g]
	Type	Mat. no.	L <sub>1</sub>	L <sub>2</sub>	L <sub>3</sub>	Ø D <sub>1</sub>	Ø D <sub>2</sub>	Ø D <sub>3</sub>	
		17							
		Stainless steel 316Ti							
676	092.020.17.00.04	●	26.0	14.0	4.0	20.0	15.0	11.0	45.0

### Retaining nuts



Series	Ordering no.		Dimensions [mm]				Weight [g] (Brass)
	Type	Mat. no.		L <sub>1</sub>	L <sub>2</sub>	Hex	
		16	30				
		Stainless steel 303	Brass				
676	092.020.xx.00.02 <sup>1</sup>	●	●	20.0	10.0	27	35.0

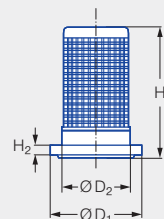
<sup>1</sup> Replace "xx" by material no.

**Notice:** The assembly accessories shown can be used with the low pressure flat fan nozzle with ball joint (series 676) (see Page 140/252).

Order Type + Material no. = Ordering no.  
 example: 092.020.xx.00.02 + 16 = 092.020.16.00.02

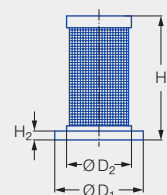


## Filter



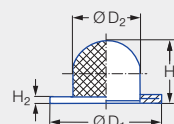
Series	Nozzle size	Ordering no.		Colour	Dimensions [mm]					Weight [g]
		Type	Mat. no.		Mesh size	H <sub>1</sub>	H <sub>2</sub>	Ø D <sub>1</sub>	Ø D <sub>2</sub>	
216/2TR/ 302/468/ 422 bayonet/ 652/646/684	xxx.32x-xxx.44x	<b>065.257</b>	● 56 POM	Blue	0.25	21.40	2.00	14.80	11.00	2.00
	xxx.48x-xxx.56x	<b>065.256</b>	●	Red	0.65	21.40	2.00	14.80	11.00	2.00

## Filter



Series	Nozzle size	Ordering no.		Colour	Dimensions [mm]					Weight [g]
		Type	Mat. no.		Mesh size	H <sub>1</sub>	H <sub>2</sub>	Ø D <sub>1</sub>	Ø D <sub>2</sub>	
216/2TR/ 302/468/ 422 bayonet/ 652/646/684	xxx.32x-xxx.44x	<b>095.016.53.15.62</b>	● 53 Polypropylene	Light pink	0.08	21.00	1.60	15.00	11.00	1.00

## Cup strainer



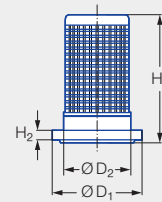
Series	Nozzle size	Ordering no.		Mesh size	Dimensions [mm]				Weight [g]
		Type	Mat. no.		H <sub>1</sub>	H <sub>2</sub>	Ø D <sub>1</sub>	Ø D <sub>2</sub>	
216/2TR/ 302/468/ 422 bayonet/ 652/646/684	xxx.32x-xxx.44x	<b>065.252</b>	● 26 Monel/Copper	0.5	8.5	1.6	14.8	9.0	1.0

Ordering Type + Material no. = Ordering no.  
example: 065.257 + 56 = 065.257.56

# Filters with ball-type non-return valve

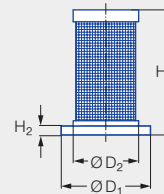


Ball-type non-return valve  
with integrated filter  
 $P_{max} = 20 \text{ bar}$



Series	Nozzle size	Ordering no.		Colour	Pressure [bar]		Dimensions [mm]					Weight [g]
		Type	Mat. no.		Opening pressure	Closing pressure	Mesh size	H <sub>1</sub>	H <sub>2</sub>	Ø D <sub>1</sub>	Ø D <sub>2</sub>	
			56									
216/2TR/ 302/468/ 422 bayonet/ 652/646/684	xxx.32x-xxx.44x	<b>065.265</b> Ball 420 SS Spring 302 SS	●	Blue	0.40-0.50	0.35-0.45	0.25	21.40	2.00	14.80	11.00	2.00
	xxx.48x-xxx.56x	<b>065.266</b> Ball 420 SS Spring 302 SS	●	Red	0.40-0.50	0.35-0.45	0.65	21.40	2.00	14.80	11.00	2.00

Ball-type non-return valve  
with integrated filter



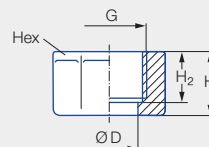
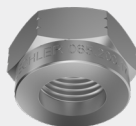
Series	Nozzle size	Ordering no.		Colour	Pressure [bar]		Dimensions [mm]					Weight [g]
		Type	Mat. no.		Opening pressure	Closing pressure	Mesh size	H <sub>1</sub>	H <sub>2</sub>	Ø D <sub>1</sub>	Ø D <sub>2</sub>	
			53									
216/2TR/ 302/468/ 422 bayonet/ 652/646/684	xxx.14x-xxx.36x	<b>095.016.53.11.00</b> Strainer insert/ Ball 304 SS Spring 302 SS	●	Blue	approx. 0.50	approx. 0.30	0.08	21.00	1.60	15.00	11.00	2.00
	xxx.14x-xxx.36x	<b>095.016.53.14.63</b> Strainer insert/ Ball 304 SS Spring 302 SS	●	Green	approx. 2.80	approx. 1.60	0.08	21.00	1.50	15.00	11.00	2.00

Ordering Type + Material no. = Ordering no.  
example: 065.265 + 56 = 065.265.56

# Retaining nuts and gaskets



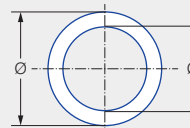
## Retaining nuts



Series	Ordering no.						G BSPP	Dimensions [mm]				Weight [g] (Brass)	
	Type	Mat. no.						H <sub>1</sub>	H <sub>2</sub>	Ø D	Hex		
		16	17 <sup>1</sup>	1Y	30	56 Black							5E Blue
		Stainless steel 303	Stainless steel 316Ti	Stainless steel 316L	Brass	POM	PVDF						
226/2TR/ 468/652/660/ 684/548/679	065.200	●	●		●			3/8	13.0	10.0	12.8	22	25.0
	065.200					●	●	3/8	14.5	11.5	13.0	22	25.0
	069.000	●		●	●			UNF 11/16	14.3	9.7	13.1	20.6	25.0
656/657/ 664/665	065.600	●	●		●		●	3/4	16.0	13.0	20.1	32	60.0

<sup>1</sup> We reserve the right to supply material 316Ti or 316L under material no. 17.

## Gaskets



Series	Nozzle Code	Ordering no.				Dimensions [mm]	Weight [g]	
		Type	Mat. no.					
			55	71	72			73
		PTFE	Cu. ISO PL. 7504	EWP 210 (asbestos-free)	Soft rubber			
610	1/8 BSPP	061.040		●		Ø 10.00 x Ø 14.00 x 1.00	0.13	
220/612	1/4 BSPP	061.240	●	● <sup>1</sup>	●	Ø 13.20 x Ø 17.00 x 1.00	0.20	
490/491/ 460/461/ 616/617/689	3/4 BSPP	061.640		● <sup>2</sup>	●	Ø 26.50 x Ø 32.00 x 1.00	0.50	
405	1 1/4 BSPP	062.140			●	Ø 42.00 x Ø 50.00 x 1.00	1.20	
405	2 BSPP	062.540			●	Ø 60.00 x Ø 70.00 x 2.00	3.92	
226/468/652/ 684/679	Retaining nut 3/8	065.240	●		●	Ø 11.00 x Ø 15.00 x 1.00	0.14	
656/657	Retaining nut 3/4	065.640			●	Ø 18.00 x Ø 24.00 x 1.00	0.50	
<b>PTFE sealing tape</b> For connecting cylindrical female threads and tapered male threads BSPT		095.009.55.09.30.0				12 mm x 0.1 mm x 12 m	-	

<sup>1</sup> Dimensions [mm] for mat. no. 71: 13.20 x 17.00 x 2.00.

<sup>2</sup> Dimensions [mm] for mat. no. 71: 26.50 x 32.00 x 2.50.

Ordering Type + Material no. = Ordering no.  
 example: 065.200 + 16 = 065.200.16

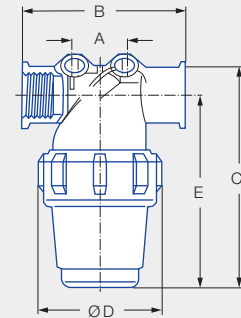
# Strainers

## Max. 12 bar



### Standard strainer for industrial application

- For operating pressure levels up to 12 bar.  
With large filter surfaces
- Mesh size is colour coded:
  - 0.6 mm = red
  - 0.3 mm = blue
  - 0.2 mm = green
- Easy handling
- Robust version
- Slender design



Type		Code BSPP	Dimensions [mm]					Weight [g]
			A	B	C	S	ØD	
<b>S.GA2.</b>	<b>S.GI2.</b>	1/2	27.0	97.0	140.0	118.0	74.0	200.0
<b>S.GA3.</b>	<b>S.GI3.</b>	3/4	27.0	97.0	140.0	118.0	74.0	200.0
<b>S.GA4.</b>	<b>S.GI4.</b>	1	40.0	112.0	175.0	143.0	86.0	300.0
<b>S.GA5.</b>	<b>S.GI5.</b>	1 1/4	39.0	146.0	280.0	239.0	116.0	630.0
<b>S.GA6.</b>	<b>S.GI6.</b>	1 1/2	39.0	146.0	280.0	239.0	116.0	630.0

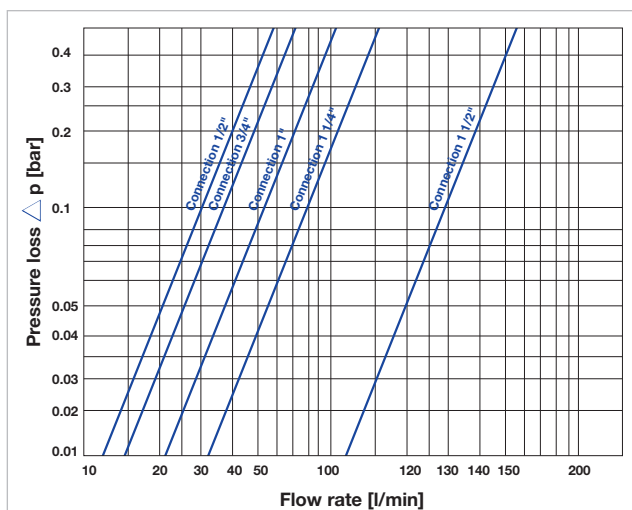
### Pressure/Temperature ranges

Max. temperature [°C]	p <sub>max</sub> [bar]
20	12
60	7

	Ordering no.			Standard strainer insert/Standard filter	
	Type	Size	Mat. no.	Mesh size [mm]	Type (blue)
			53 Polypropylene		
Male thread	<b>S.GA2.</b>	<b>012.</b>	●	0.3	S.000.012.00.26.03
	<b>S.GA3.</b>	<b>034.</b>	●	0.3	S.000.012.00.26.03
	<b>S.GA4.</b>	<b>100.</b>	●	0.3	S.000.100.00.26.03
	<b>S.GA5.</b>	<b>114.</b>	●	0.3	S.000.114.00.26.03
	<b>S.GA6.</b>	<b>112.</b>	●	0.3	S.000.114.00.26.03
Female thread	<b>S.GI2.</b>	<b>012.</b>	●	0.3	S.000.012.00.26.03
	<b>S.GI3.</b>	<b>034.</b>	●	0.3	S.000.012.00.26.03
	<b>S.GI4.</b>	<b>100.</b>	●	0.3	S.000.100.00.26.03
	<b>S.GI5.</b>	<b>114.</b>	●	0.3	S.000.114.00.26.03
	<b>S.GI6.</b>	<b>112.</b>	●	0.3	S.000.114.00.26.03

Optional strainer inserts			
Mesh size [mm]	Type (red)	Mesh size [mm]	Type (green)
0.6	S.000.012.00.26.06	0.2	S.000.012.00.26.02
0.6	S.000.012.00.26.06	0.2	S.000.012.00.26.02
0.6	S.000.100.00.26.06	0.2	S.000.100.00.26.02
0.6	S.000.100.00.26.06	0.2	S.000.100.00.26.02
0.6	S.000.114.00.26.06	0.2	S.000.114.00.26.02
0.6	S.000.114.00.26.06	0.2	S.000.114.00.26.02
0.6	S.000.012.00.26.06	0.2	S.000.012.00.26.02
0.6	S.000.012.00.26.06	0.2	S.000.012.00.26.02
0.6	S.000.012.00.26.06	0.2	S.000.012.00.26.02
0.6	S.000.100.00.26.06	0.2	S.000.100.00.26.02
0.6	S.000.100.00.26.06	0.2	S.000.100.00.26.02
0.6	S.000.114.00.26.06	0.2	S.000.114.00.26.02
0.6	S.000.114.00.26.06	0.2	S.000.114.00.26.02

**Notice:** Standard strainer insert (blue) included in the scope of supply.



### Correction factors for Δp

Viscosity [mPa·s]	Basket – mesh size [mm]		
	0.6	0.3	0.2
1.0 (water)	1.0	1.2	1.4
100.0	1.6	1.9	2.0
200.0	1.7	2.2	2.3

Ordering Type + Size + Material no. = Ordering no.  
example: S.GA2. + 012. + 53 = S.GA2.012.53



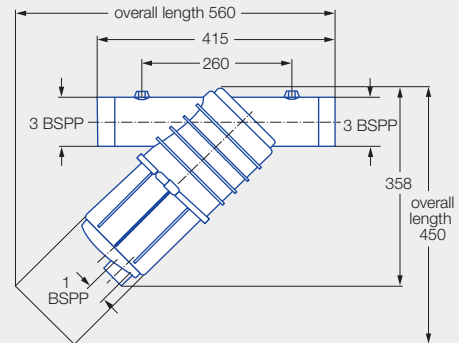
# Strainers

## Max. 8 bar



### Strainer with high flow rate and low resistance

- Integrated flow deflector prevents clogging of the filter insert
- Dirt particles can be removed via an offset outlet port
- Prepared for the install of two pressure gauges



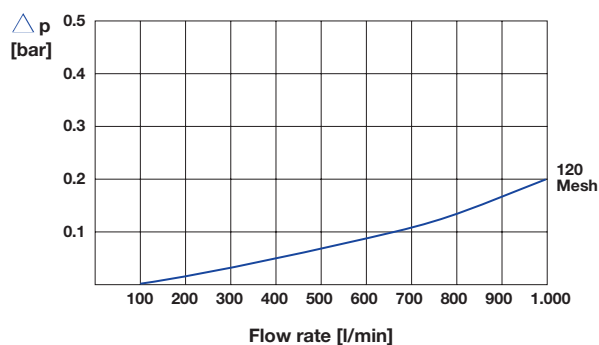
### Strainer with screen

Type	Size	Ordering no.		Screen mesh size [µm/mesh]
		Mat. no.		
		53		
		Polypropylene		
S.GA2.	300.	●		594/32
S.GA3.	300.	●		365/50
S.GA4.	300.	●		173/100
S.GA5.	300.	●		144/120

### Screen

Type	Size	Ordering no.		Screen mesh size [µm/mesh]
		Mat. no.		
		26	5A	
		Stainless steel 304	Polyester/ Stainless steel	
S.002.	300.00.	●		594/32
S.003.	300.00.	●		365/50
S.004.	300.00.	●		173/100
S.005.	300.00.		●	144/120

### Pressure loss chart



### Technical data

Screening surface	860 cm <sup>2</sup>
Screening insert Ø	145 mm
Height of screening insert	320 mm
Inflow/Outflow port Ø	3"
Pressure gauge connection Ø	1/4 BSPP
Max. operating pressure	8 bar

### Ordering example for strainer:

Ordering Type + Size + Material no. = Ordering no.  
 example: S.GA2. + 300. + 53 = S.GA2.300.53

### Ordering example for strainer insert:

Ordering Type + Size + Material no. = Ordering no.  
 example: S.002. + 300.00. + 26 = S.002.300.00.26

